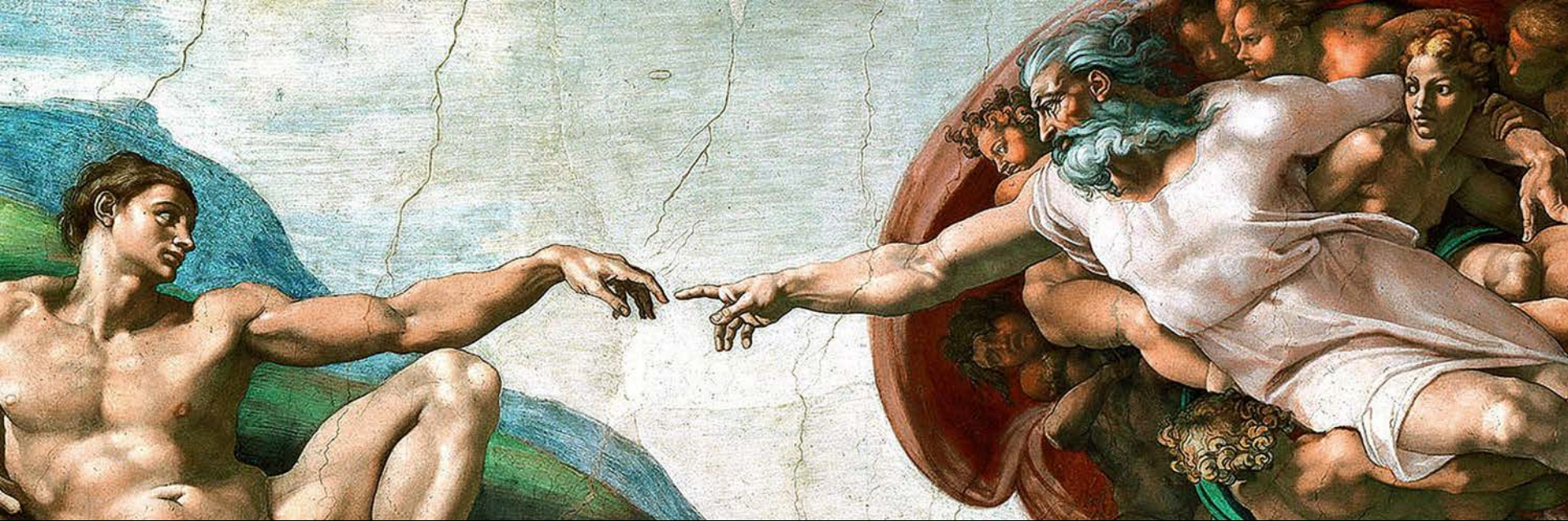


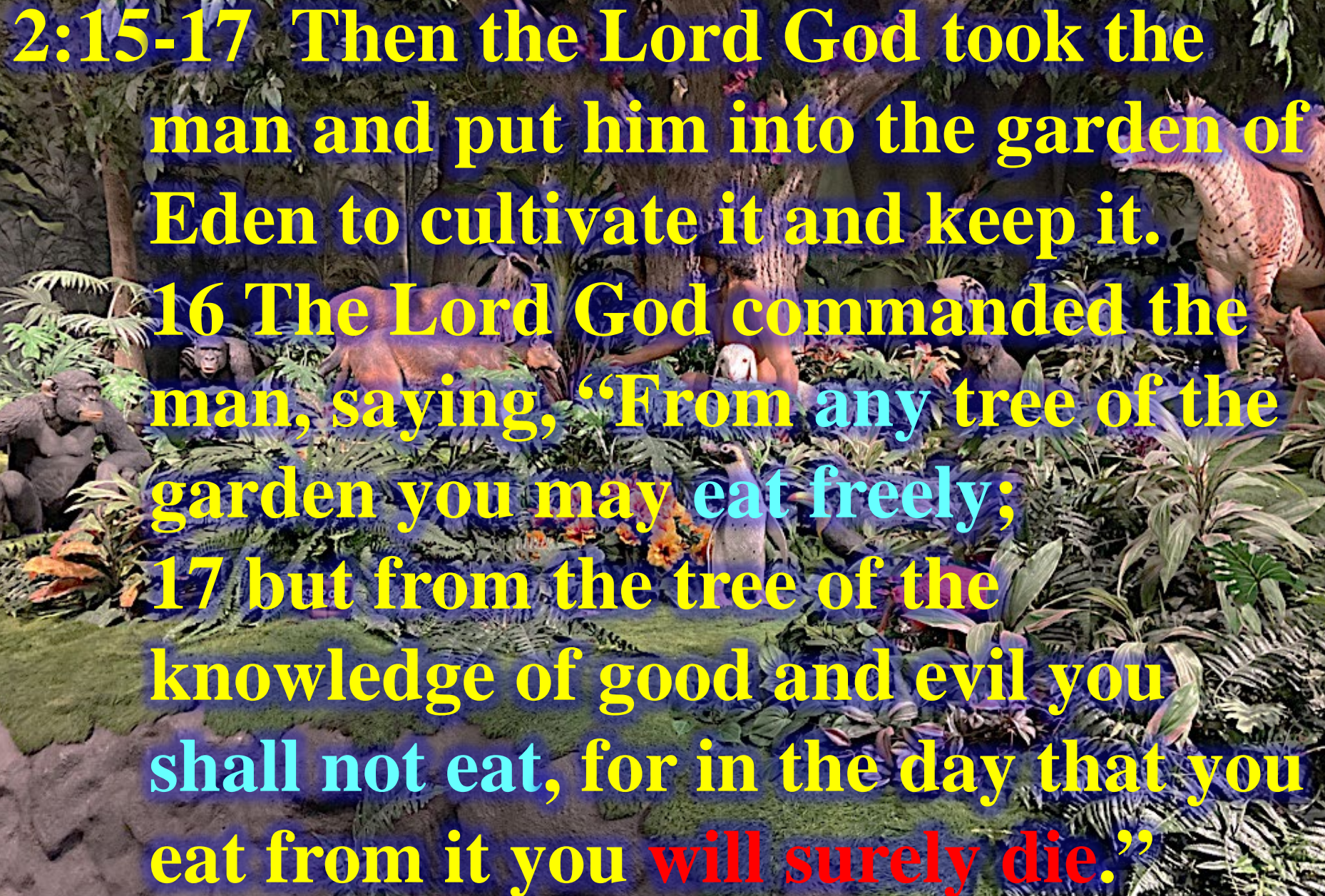
SCIENCE &

SCRIPTURE



**“God saw all that He had made,
and behold, it was very good.”**

Gen 1:31

A vibrant, colorful illustration of a lush jungle scene. In the foreground, a large, gnarled tree trunk stands amidst dense green foliage and various plants. Several animals are visible: a brown bear-like creature on the left, a large brown animal (possibly a mammoth or bison) in the center, and a spotted dinosaur-like creature on the right. The background is filled with more trees and greenery, creating a sense of a deep, wild forest. The overall atmosphere is bright and detailed.

2:15-17 Then the Lord God took the man and put him into the garden of Eden to cultivate it and keep it.

16 The Lord God commanded the man, saying, “From any tree of the garden you may eat freely;

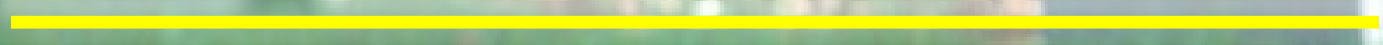
17 but from the tree of the knowledge of good and evil you shall not eat, for in the day that you eat from it you will surely die.”

GENESIS Outline

- I. Primeval History** **1:1-11:26**
 - A. History of the Creation** **1:1-2:3**
 - 1. Creation of Mankind** **2:4-25**
 - 2. Fall of Mankind** **3:1-24**



FALL



GENESIS Outline

- I. Primeval History** **1:1-11:26**
 - A. History of the Creation** **1:1-2:3**
 - 1. Creation of Mankind** **2:4-25**
 - 2. Fall of Mankind** **3:1-24**
 - a. Temptation** **3:1-5**
 - b. Transgression** **3:6-7**
 - c. Confrontation** **3:8-13**

DEATH


- 
1. Intellectual (7) - darkened
2. Moral (7, 10) - guilt
3. Spiritual (7-9) - separation
4. Emotional (10) - fear
5. Social (11-12) - blame

IMAGE After Fall

- 
- A woman with long dark hair and a man with dark hair are sitting in a lush forest filled with ferns and birch trees. The woman is looking towards the man, who has his back to the camera. The scene is dimly lit, suggesting a twilight or dawn setting.
- Spirituality
 - Immortality
 - Intellect
 - Volitional
 - Creativity
 - Communicate
 - Dead/Life
 - 2nd Death/Life
 - Darkened/Renewed
 - Rebellion/Obedient
 - Distorted/Glory
 - Deception/Truth

GENESIS Outline

- I. Primeval History** **1:1-11:26**
 - A. History of the Creation** **1:1-2:3**
 - 1. Creation of Mankind** **2:4-25**
 - 2. Fall of Mankind** **3:1-24**
 - a. Temptation** **3:1-5**
 - b. Transgression** **3:6-7**
 - c. Confrontation** **3:8-13**
 - d. Condemnation** **3:14-19**
 - 1) On Serpent** **3:14-15**

**3:14 The LORD God said to the serpent,
“Because you have done this,
Cursed are you more than all cattle,
And more than every beast of the field;
On your belly you will go,
And dust you will eat
All the days of your life;**

**3:14 The LORD God said to the serpent,
“Because you have done this,
Cursed are you more than all cattle,
And more than every beast of the field;
On your belly you will go,
And dust you will eat
All the days of your life;**

KEY TERMS

1. Cursed - אָרוּר (arur)
divine harm invoked
play on words with 3:1
more crafty - עָרוּם (`arum)

**3:14 The LORD God said to the serpent,
“Because you have done this,
Cursed are you more than all cattle,
And more than every beast of the field;
On your belly you will go,
And dust you will eat
All the days of your life;**

PHYSICAL EFFECTS

Rom 8:19-22

➤ Zoology (14) - serpent cursed

**3:14 The LORD God said to the serpent,
“Because you have done this,
Cursed are you more than all cattle,
And more than every beast of the field;
On your belly you will go,
And dust you will eat
All the days of your life;**

KEY TERMS

- 1. Cursed - אָרַר (arur)
divine harm invoked**
- 2. Eating dust - Hebrew idiom for
humiliation & utter degradation
Ps 72:9, Isa 49:23**

3:15 **And I will put enmity**
Between you and the woman,
And between your seed and her seed;
He shall bruise you on the head,
And you shall bruise him on the heel.”

3:15 And I will put enmity
Between you and the woman,
And between your seed and her seed;
He shall bruise you on the head,
And you shall bruise him on the heel.”

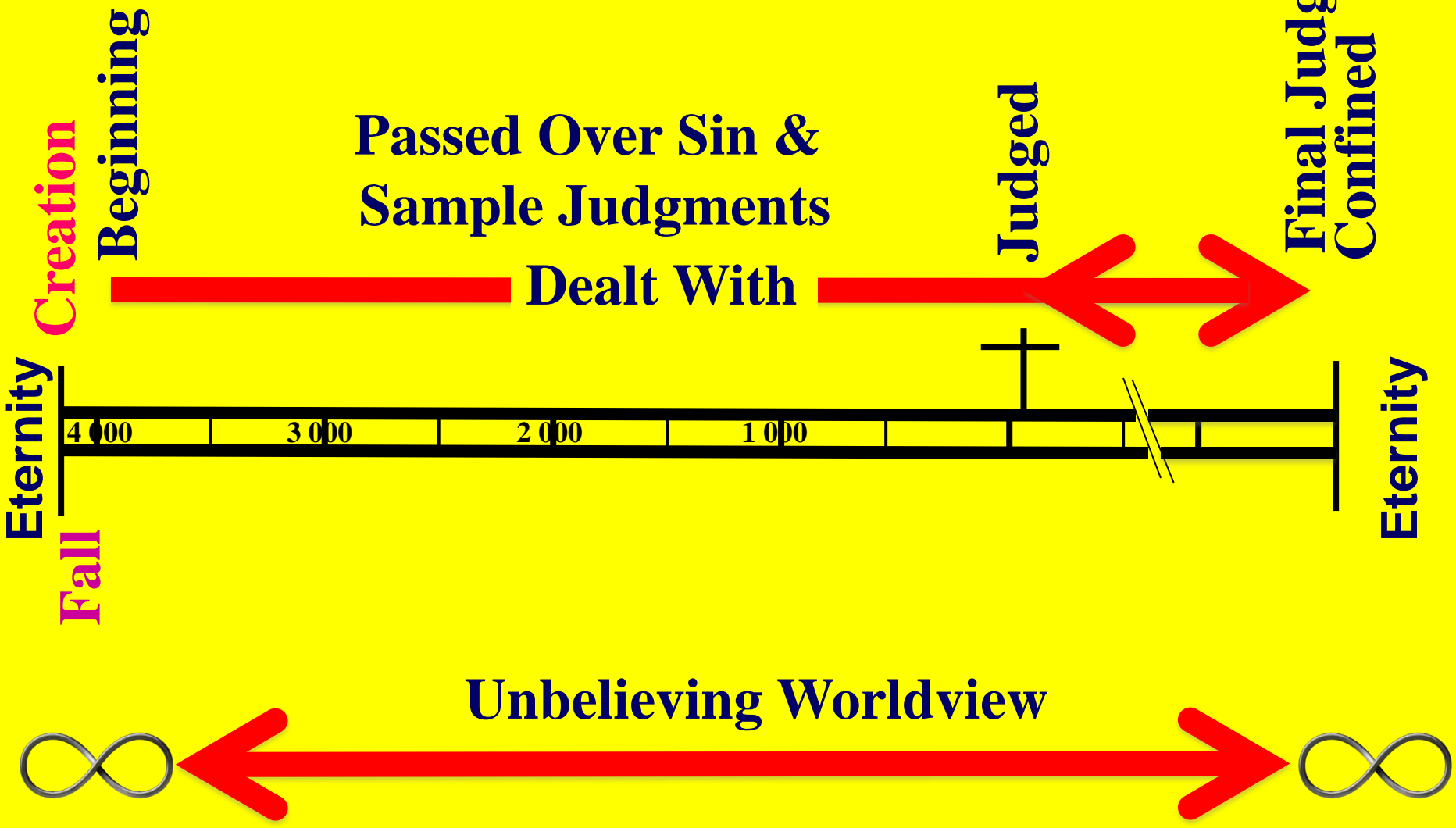
KEY TERMS

- 1. Cursed - אָרוּר (arur)
divine harm invoked**
- 2. Eating dust - Hebrew idiom for
humiliation & utter degradation**
- 3. Seed - זֶרַע (zerah)
offspring, descendant**

3:15 And I will put enmity
Between you and the woman,
And between your seed and her seed;
He shall bruise you on the head,
And you shall bruise him on the heel.”

3:15 And I will put enmity
Between you and the woman,
And between your seed and her seed;
He shall bruise you on the head,
And you shall bruise him on the heel.”

EVIL BOUNDED



CONDEMNATION

PUNISHMENT

➤ **Serpent - Cursed**
Enmity

PROTEVANGELIUM

- **Satan -** enmity with woman
between seeds
ultimate judgment
- **Woman -** seed
Messiah
Cross

GENESIS Outline

- | | |
|---------------------------|----------------|
| 2. Fall of Mankind | 3:1-24 |
| a. Temptation | 3:1-5 |
| b. Transgression | 3:6-7 |
| c. Confrontation | 3:8-13 |
| d. Condemnation | 3:14-19 |
| 1) On Serpent | 3:14-15 |
| 2) On Woman | 3:16 |

3:16 To the woman He said,
“I will greatly multiply Your
pain in childbirth,
In pain you will bring forth
children;
Yet your desire will be for your
husband,
And he will rule over you.”

**3:16 To the woman He said,
“I will greatly multiply Your
pain in childbirth,
In pain you will bring forth
children;
Yet your desire will be for your
husband,
And he will rule over you.”**

PHYSICAL EFFECTS

Rom 8:19-22

- **Zoology (14) - serpent cursed**
- **Anthropology (16) - woman's pain**

**3:16 To the woman He said,
“I will greatly multiply Your
pain in childbirth,
In pain you will bring forth
children;
Yet your desire will be for your
husband,
And he will rule over you.”**

CONDEMNATION

PUNISHMENT

- **Serpent - Cursed**
Enmity
- **Woman - Child Birth**
Submission

GENESIS Outline

- | | |
|---------------------------|----------------|
| 2. Fall of Mankind | 3:1-24 |
| a. Temptation | 3:1-5 |
| b. Transgression | 3:6-7 |
| c. Confrontation | 3:8-13 |
| d. Condemnation | 3:14-19 |
| 1) On Serpent | 3:14-15 |
| 2) On Woman | 3:16 |
| 3) On Man | 3:16-19 |

3:17 Then to Adam He said,

“Because you have listened to the voice of your wife, and have eaten from the tree about which I commanded you, saying,

‘You shall not eat from it’;

Cursed is the ground because of you;

In toil you will eat of it All the days of your life.

**3:17 Then to Adam He said,
“Because you have listened to the voice
of your wife, and have eaten from the
tree about which I commanded you,
saying,
‘You shall not eat from it’;
Cursed is the ground because of you;
In toil you will eat of it All the days of
your life.**

PHYSICAL EFFECTS

Rom 8:19-22

- **Zoology (14) - serpent cursed**
- **Anthropology (16) - woman's pain**
- **Geophysics (17) - ground cursed**

**3:17 Then to Adam He said,
“Because you have listened to the voice
of your wife, and have eaten from the
tree about which I commanded you,
saying,
‘You shall not eat from it’;
Cursed is the ground because of you;
In toil you will eat of it All the days of
your life.**

PHYSICAL EFFECTS

Rom 8:19-22

- **Zoology (14) - serpent cursed**
- **Anthropology (16) - woman's pain**
- **Geophysics (17) - ground cursed**
- **Physics (17) - toil, sweat, death**

DEATH

A silhouette of the Grim Reaper, a figure associated with death, holding a scythe. The figure is positioned on the right side of the image, set against a background of a sunset or sunrise with a bright sun low on the horizon, creating a hazy, atmospheric glow. The overall color palette is dark with warm tones from the sun.

1. Intellectual (7) -

darkened

2. Moral (7, 10) -

guilt

3. Spiritual (7-9) -

separation

4. Emotional (10) -

fear

5. Social (11-12) -

blame

6. Purpose (17-19) -

damaged

3:18 “**Both thorns and thistles it shall grow
for you;
And you will eat the plants of the field;**

PHYSICAL EFFECTS

Rom 8:19-22

- **Zoology (14) - serpent cursed**
- **Anthropology (16) - woman's pain**
- **Geophysics (17) - ground cursed**
- **Physics (17) - toil, sweat, death**
- **Botany (18) - thorns & thistles**

**3:19 By the sweat of your face You will eat
bread,
Till you return to the ground,
Because from it you were taken;
For you are dust,
And to dust you shall return.’**

**3:19 By the sweat of your face You will eat
bread,
Till you return to the ground,
Because from it you were taken;
For you are dust,
And to dust you shall return.’**

**3:19 By the sweat of your face You will eat
bread,
Till you return to the ground,
Because from it you were taken;
For you are dust,
And to dust you shall return.’**


PHYSICAL EFFECTS

Rom 8:19-22

- **Zoology (14) - serpent cursed**
- **Anthropology (16) - woman's pain**
- **Geophysics (17) - ground cursed**
- **Physics (17) - toil, sweat, death**
- **Botany (18) - thorns & thistles**
- **Biology (18) & more Physics (19)**

**3:19 By the sweat of your face You will eat
bread,
Till you return to the ground,
Because from it you were taken;
For you are dust,
And to dust you shall return.’**

DEATH

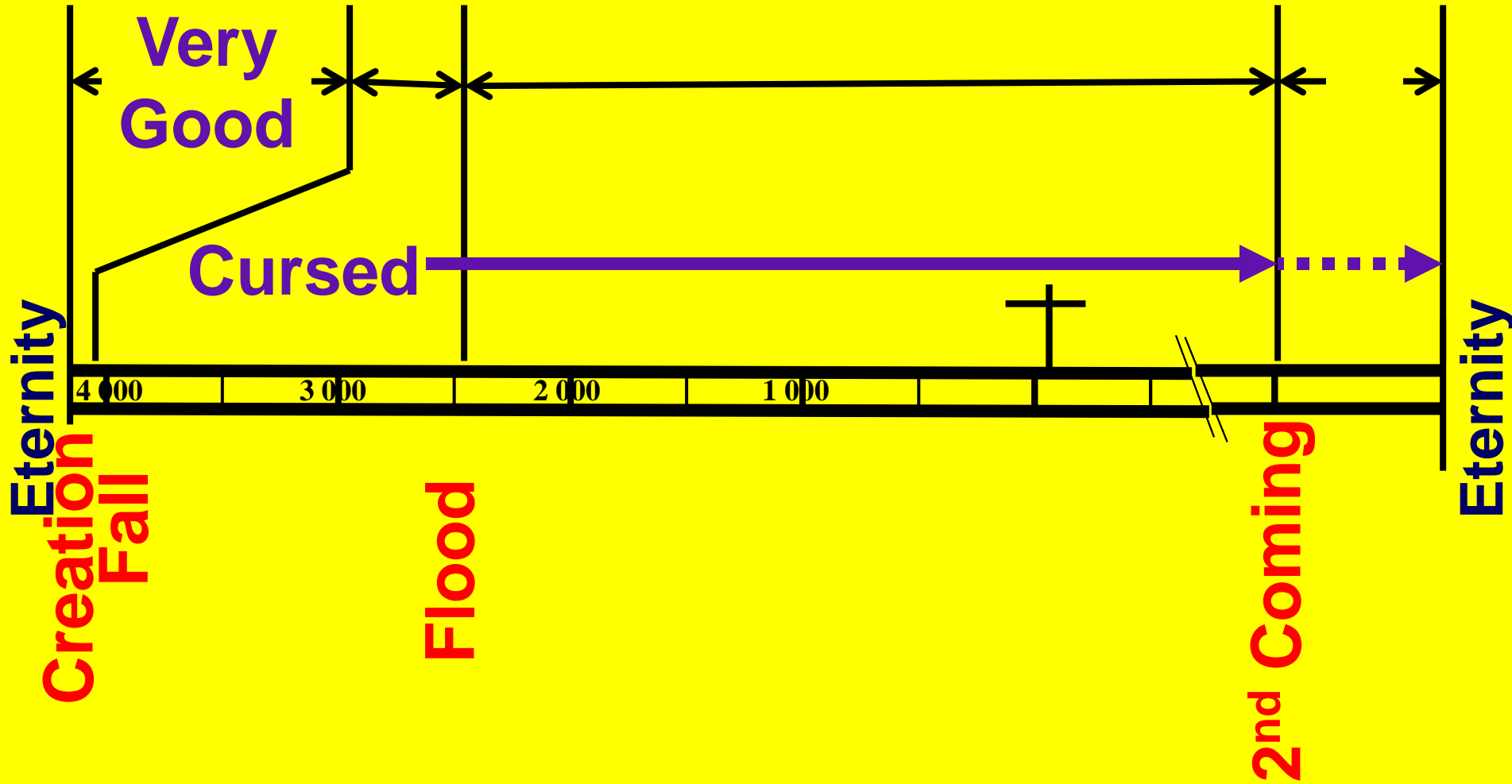
- 
1. Intellectual (7) - darkened
2. Moral (7, 10) - guilt
3. Spiritual (7-9) - separation
4. Emotional (10) - fear
5. Social (11-12) - blame
6. Purpose (17-19) - damaged
7. Physical (16-19) - pain & death

CONDEMNATION

PUNISHMENT

- **Serpent - Cursed**
Enmity
- **Woman - Child Birth**
Submission
- **Man - Cursed Land**
Labor, death

RADICAL CHANGES



GENESIS Outline

- I. Primeval History** **1:1-11:26**
 - A. History of the Creation** **1:1-2:3**
 - 1. Creation of Mankind** **2:4-25**
 - 2. Fall of Mankind** **3:1-24**
 - a. Temptation** **3:1-5**
 - b. Transgression** **3:6-7**
 - c. Confrontation** **3:8-13**
 - d. Condemnation** **3:14-19**
 - e. Provision** **3:20-24**

3:20-21 Now the man called his wife's name **Eve**, because she was the mother of all the living. **21** The **LORD** God made garments of skin for Adam and his wife, and clothed them.

3:20-21 Now the man called his wife's name Eve, because she was the mother of all the living. **21** The LORD God made garments of skin for Adam and his wife, and clothed them.

PROVISION

A man with a beard, wearing a white, shaggy robe, stands with his hands raised in a gesture of prayer or offering. He is positioned behind a large animal carcass, likely a lamb, which is laid out on a bed of straw. To the left, a woman with long, light-colored hair, wearing a white robe, stands with her back to the camera, looking towards the man and the animal. The background is dark, and the scene is lit with dramatic, low-key lighting.

1. Decreed - Messiah
2. Faith - Eve
3. Access to God - sin covered
4. Sacrifice - provision
5. Substitution - death
6. Imputation - clothes

CONDEMNATION

PUNISHMENT

- **Serpent - Cursed**
Enmity
- **Woman - Child Birth**
Submission
- **Man - Cursed Land**
Labor, death

PROVISION

- **Messiah**
- **Life**
- **Redemption**
- **Expulsion**
- **Service**

A photograph of a sunset over a large body of water, likely the Sea of Galilee. The sun is a bright orange circle on the horizon, with its light reflecting on the water's surface. The sky is filled with soft, golden clouds. The foreground shows the dark silhouette of a hillside with some trees.

**We can praise our Lord
That He will restore the Creation
to better than the original!!!**

Sea of Galilee from Kursi